

A

B

C

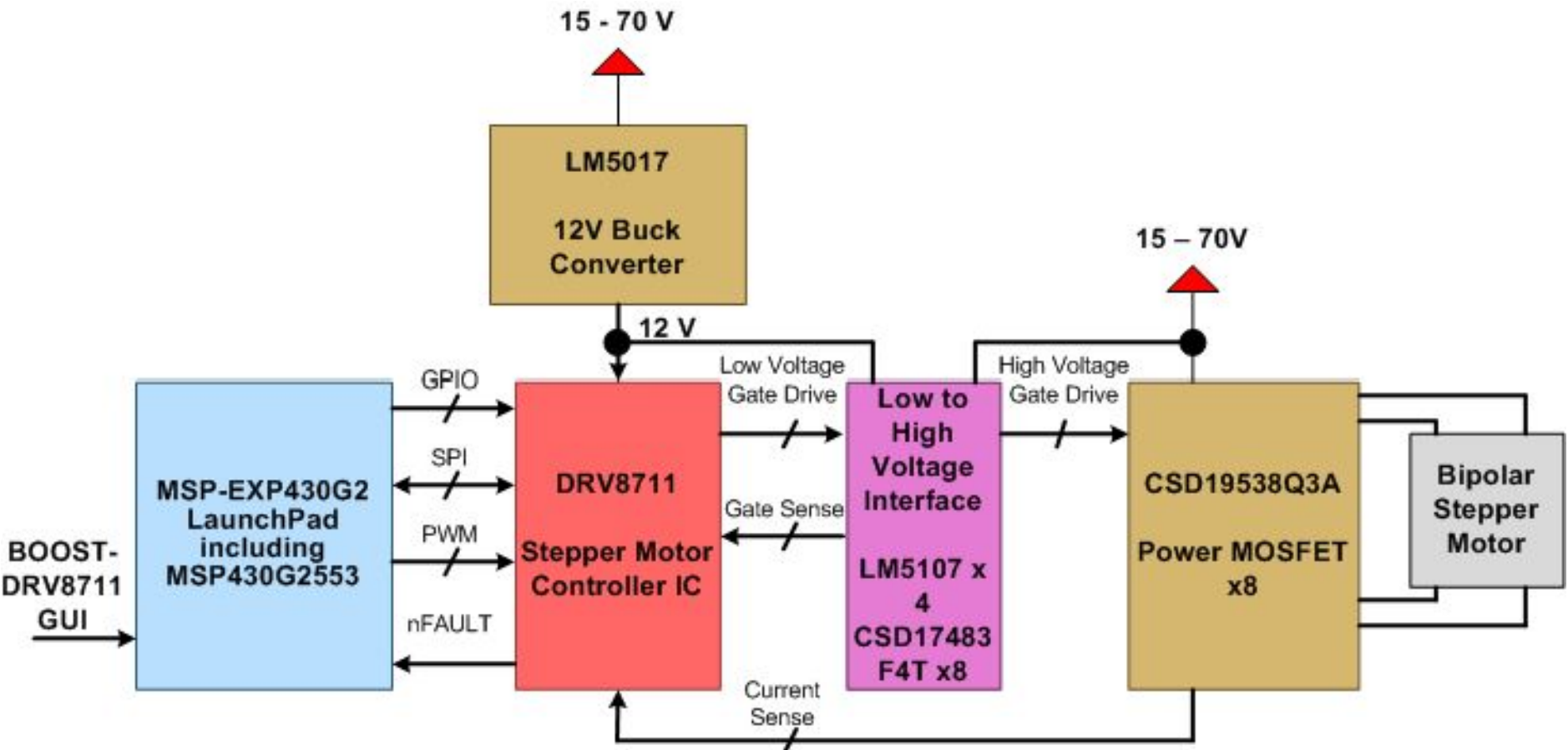
D

A

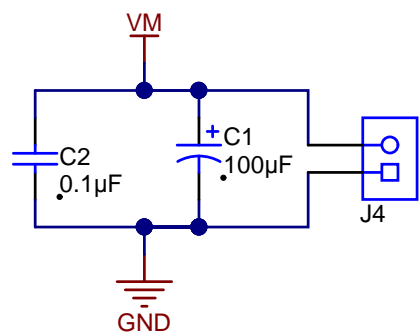
B

C

D



Power/Motor Connections



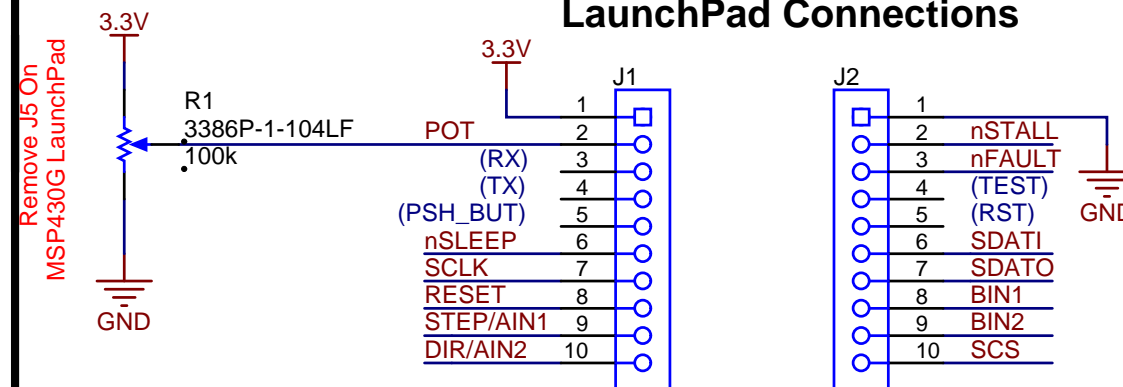
AOUT1_MOT
AOUT2_MOT

J3

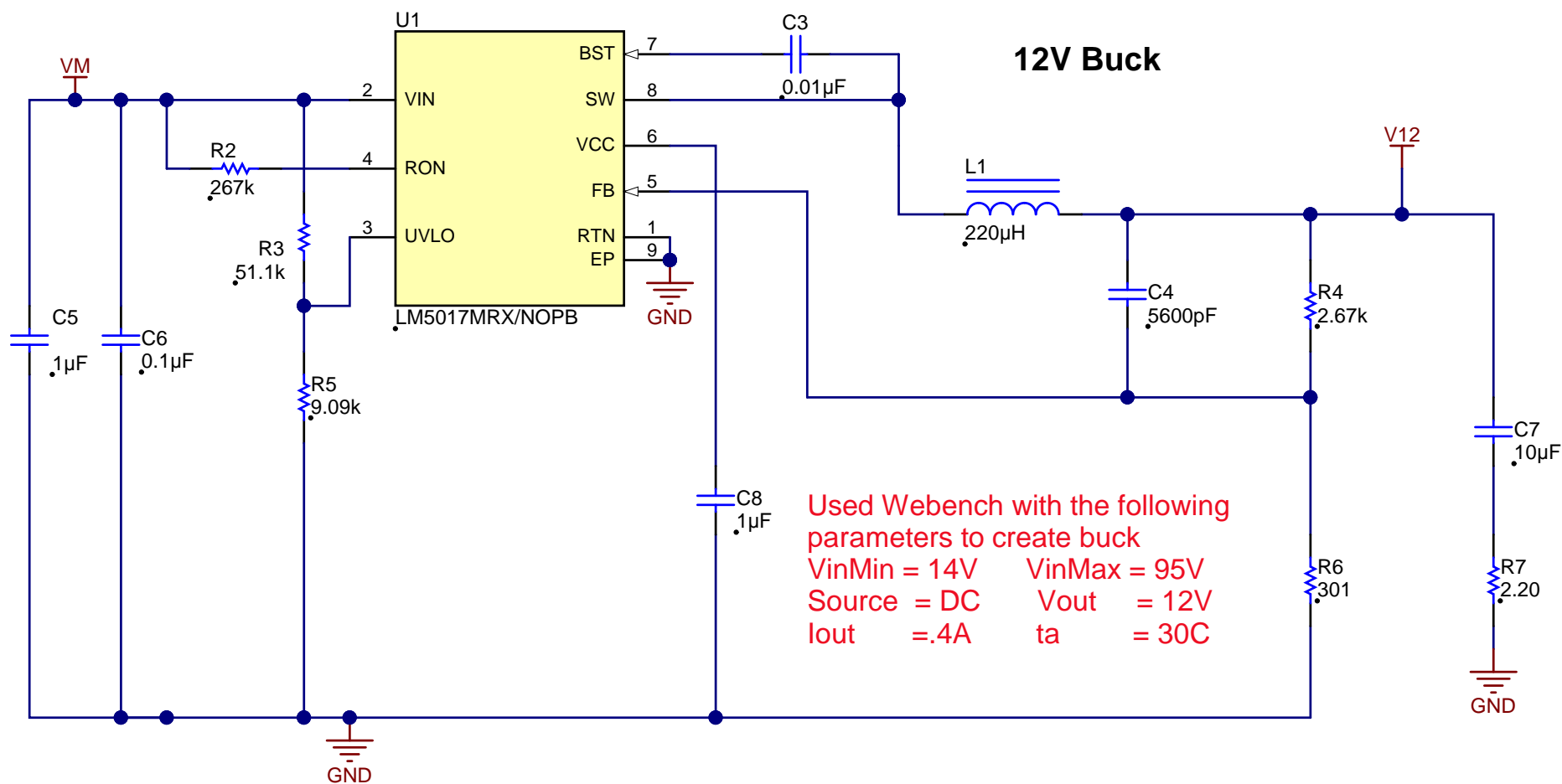
BOUT1_MOT
BOUT2_MOT

J5

LaunchPad Connections



12V Buck



Used Webench with the following
parameters to create buck
VinMin = 14V VinMax = 95V
Source = DC Vout = 12V
Iout = .4A ta = 30C

PCB
LOGOPCB
LOGO
FCC disclaimerDNP
FID1DNP
FID2DNP
FID3

PCB Number: TIDA-01227
PCB Rev: E2

Texas Instruments and/or its licensors do not warrant the accuracy or completeness of this specification or any information contained therein. Texas Instruments and/or its licensors do not warrant that this design will meet the specifications, will be suitable for your application or fit for any particular purpose, or will operate in an implementation. Texas Instruments and/or its licensors do not warrant that the design is production worthy. You should completely validate and test your design implementation to confirm the system functionality for your application.

Number: [TIDA-01227](#) Rev: [E2](#)
SVN Rev: Version control disabled
Drawn By:
Engineer: [Rick Duncan](#)

Designed for: [Public Release](#) Mod. Date: 11/29/2016
Project Title: [TIDA-01227 High Voltage Stepper Controller](#)
Sheet Title:
Assembly Variant: [001](#) Sheet: [2](#) of [4](#)
File: [TIDA-01227_Connectors_and_Buck.SchDoc](#) Size: A4
Contact: [http://www.ti.com/support](#)

 **TEXAS
INSTRUMENTS**
<http://www.ti.com>
© Texas Instruments 2016

12V Translators and Feedback

